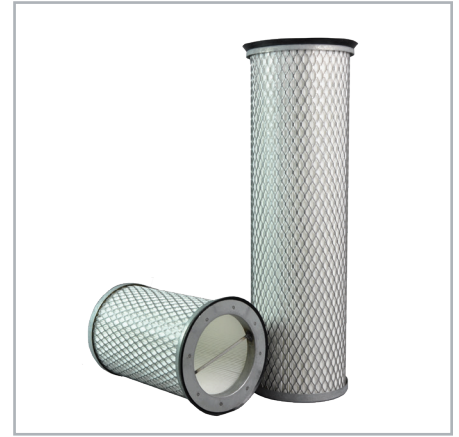


# PleatGard™ PLEATED STYLE, DRY GAS FILTER CARTRIDGES

## Series PS30F

for use in PECO Series 30F inline, small volume dry gas filter vessels or competitor vessels of similar design



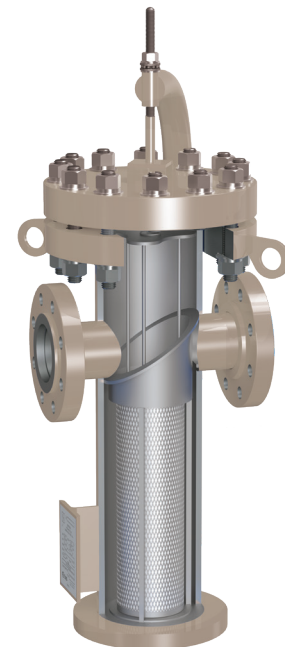
Designed for installation in PECO Series 30F inline gas filter vessels, PleatGard Series PS cartridges remove dust, scale, rust, sand and other rigid particulates from air and gas streams. Durable, highly efficient, synthetic filter media and corrosion resistant hardware ensure that PleatGard cartridges stand up to the toughest application needs. The

basket style configuration provides for easy installation and removal while isolating contaminants and preventing spillage into the vessel during removal of cartridges. A chevron gasket provides a positive seal that gets tighter as the cartridge loads with contaminants. This prevents seal breaches at high differential pressure.

FEATURES	BENEFITS
Basket Style Configuration	Easy to install and remove. Retains all contaminant within the walls of the element. This prevents spillage of contaminants into the clean side of the filter vessel that could be blown into downstream equipment after start-up.
Synthetic Media	Absolute rated polyester media provides the ultimate protection against tearing, swelling, and chemical attack. Tearing and chemical attack can leave holes in the filter media. When this occurs operators read a low differential pressure and are misled into believing the filter elements are clean and still in good condition. Meanwhile, damaging contaminants escape through the holes in the media and contaminate downstream equipment. Swelling causes differential pressure to rise rapidly even though there may be very little contaminant in the filter media. This reduces the life of the element and increases the frequency of element changes. Reduce these risk by installing PleatGard today.

- **Natural Gas Distribution**  
protect flow meter, regulators, and control valves
- **General Industrial**  
vent & exhaust gases, air dryer discharge, scrubber discharge, flow meter, regulator and control valve protection, fuel gas
- **Power Generation**  
turbine fuel gas

APPLICATIONS



ENGINEERING YOUR SUCCESS.

## MATERIALS

<b>MEDIA</b>	Polyester
<b>OUTER SUPPORT</b>	Carbon Steel
<b>END CAPS</b>	Carbon Steel
<b>SEAL</b>	Buna-N
<b>ADHESIVE</b>	Urethane

## NOMINAL DIMENSIONS

MODEL	O.D.	I.D.	LENGTH
PS-559	5.68" / 144mm	4.16" / 106mm	9" / 229mm
PS-5519	5.625" / 143mm	4" / 102mm	19" / 483mm
PS-819	7.94" / 202mm	6.47" / 165mm	19" / 483mm

## PERFORMANCE

**MICRON RATING:** 1, 2, 5, 10, 20

**EFFICIENCY:** 99.98%

## OPERATING DATA

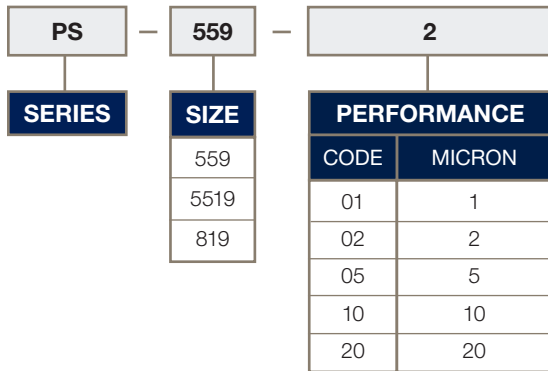
**FLOW DIRECTION:** Inside-to-Outside

**MAX TEMP:** 240°F / 116°C

**MAX. DIFFERENTIAL PRESSURE:** 35 psid / 2.4 bar

**RECOMMENDED CHANGE-OUT**

**DIFFERENTIAL PRESSURE:** 12–15 psi / 0.8–1.0 bar



**SCAN QR CODE FOR ADDITIONAL  
PRODUCT INFORMATION INCLUDING  
AVAILABLE PART NUMBERS**

For technical questions contact [ipf.technical@support.parker.com](mailto:ipf.technical@support.parker.com) or call 940-325-2575  
 To order, contact a support representative at [ipf.support@support.parker.com](mailto:ipf.support@support.parker.com) or call 940-325-2575  
 Purchasing details: Request a quote at [ipf.quotes@support.parker.com](mailto:ipf.quotes@support.parker.com)  
 Parker IPF Standard Terms & Conditions apply [www.parker.com/IPF-Aftermarket-TOS](http://www.parker.com/IPF-Aftermarket-TOS)

